

## REMOVE

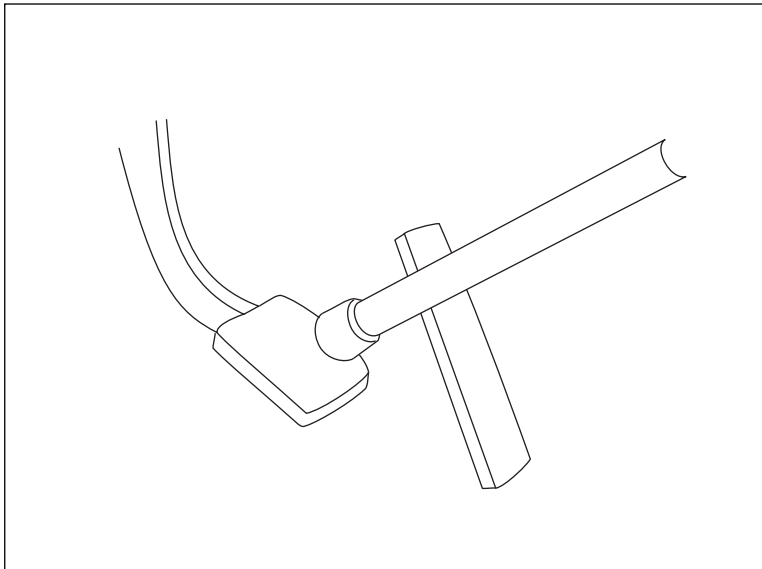
- 1 Raise and support vehicle.



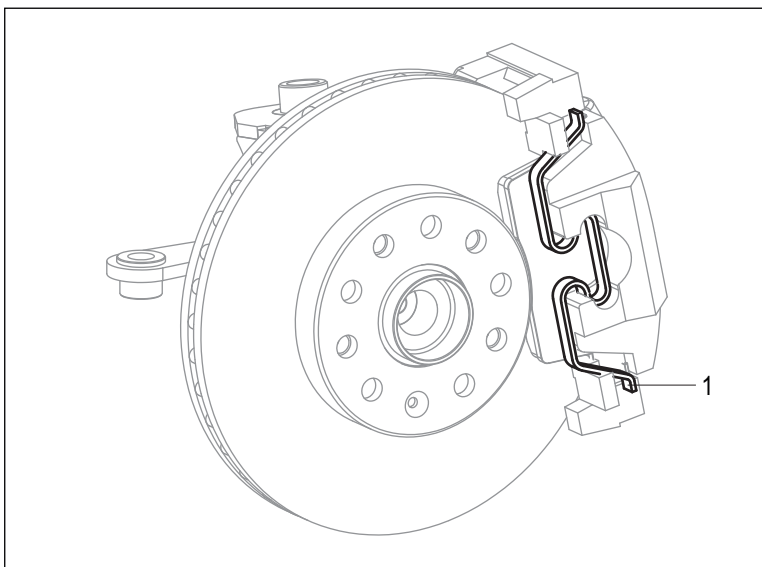
**Warning:**

Do not work on an incorrectly supported vehicle.

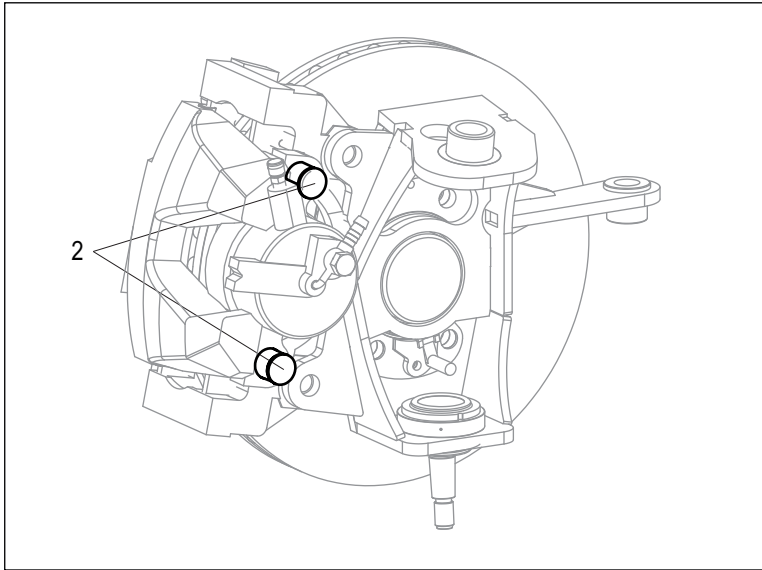
- 2 Remove the wheel.



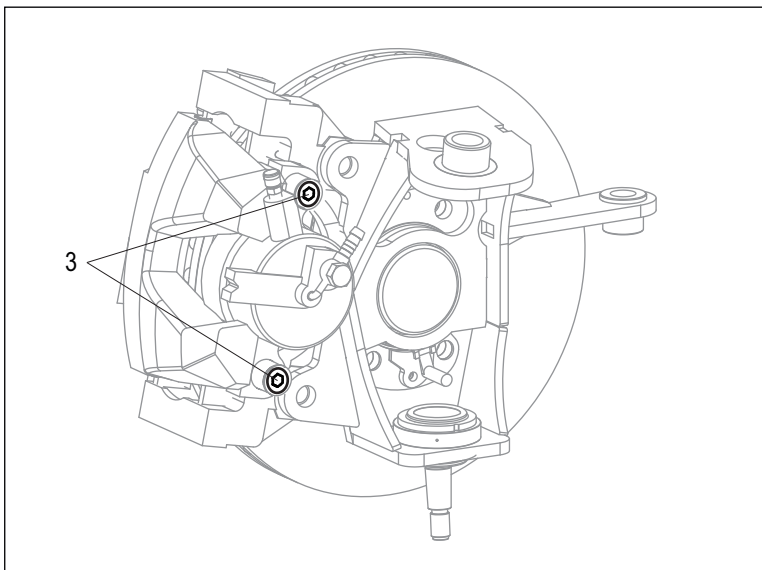
- 3 Apply a slight pressure on the brake pedal using a brake pedal depressor. It will keep some brake fluid in the expansion tank even after opening the brake system.



- 4 Remove retaining spring (1)



◀ 5 Remove plastic plugs (2)



◀ 6 Unfasten and remove guide bolts (3). Lift out the brake caliper.

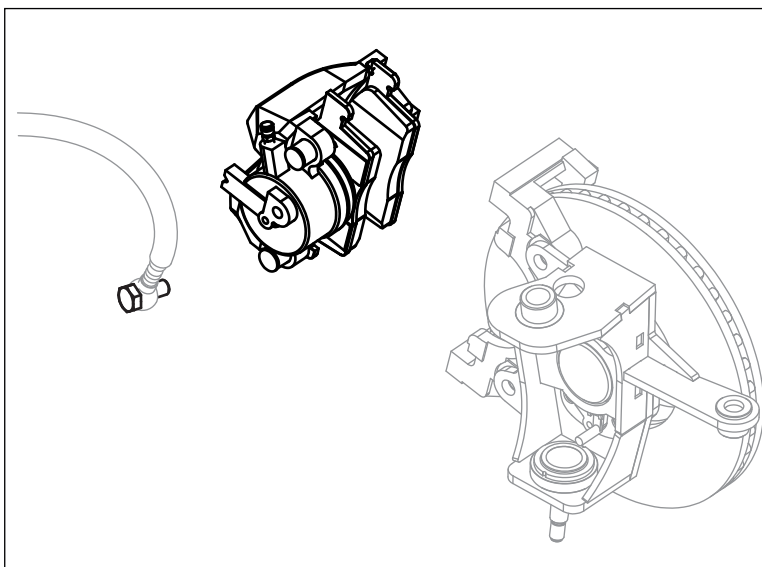
**Installation note:**

Only clean guide screws; do not grease.

Check threads.

Replace all guide screws which are not in perfect condition.

 Torque 30 Nm



◀ 7 Unfasten the brake hose on brake caliper and replace the caliper. Tighten the banjo bolt

 **Caution:**

If brake fluid spills on the paintwork, wash the area immediately with clean water.

 Torque 40 Nm

### INSTALL

Installation procedure is the reverse of removal, except for the following:

- 1 Bleed brakes (see **BRAKE BLEEDING** section)